

PARTNERS IN MINISTRY

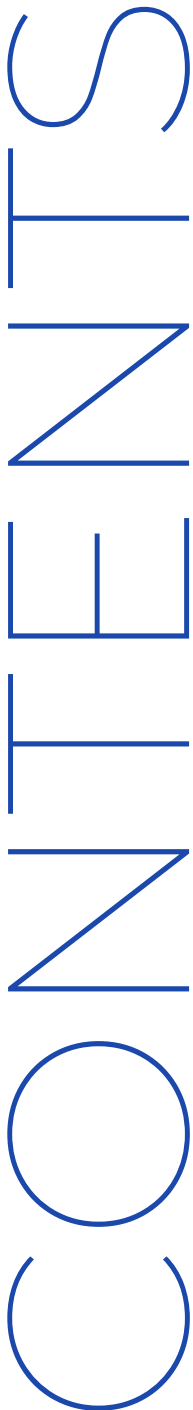
IMPACT REPORT



2021

INSTILLING HOPE, EMPOWERING CHANGE,
ONE FAMILY AT A TIME.

Table of Contents



- 01.
Message from The Executive Director
- 02.
Programs and Services
- 03.
Strengthening Youth through Science,
Technology, Engineering and Math
- 04.
Youth Empowered to Succeed
- 05.
Rehab Outreach And Recovery
- 06.
Resource and Referral Center:
Food Pantry, Community Garden, Gift
Shop, & Outreach Ministry
- 07.
PIM's Events and Activities
- 08.
Building Bridges

MISSION:

“Instilling Hope and Empowering Change, One Family at a Time,” by helping to break the cycle of generational poverty in struggling communities and building and sustaining healthy families.

PURPOSE:

Partners In Ministry, a United Women In Faith National Mission Institution, serves as a “One-Stop Resource and Referral Center”. The center is a healthy, safe, drug-free, and violence-free facility for at-risk youth and their families. A place conducive to developing academic, social, and cultural life-long skills, that are essential to positively impacting their community.

Serving ...



Richmond County



Robeson County



Scotland County

MESSAGE FROM OUR EXECUTIVE DIRECTOR

04



Thank you for partnering and supporting Partners In Ministry (PIM) in 2021. The organization continues to provide critical services to the communities of Richmond, Robeson, and Scotland County by addressing the socio-economic issues affecting our region.

Despite the uphill challenges, PIM remains committed to providing comprehensive programs to children, youth, adults, and families in our local communities. Our dedicated team extends help to countless families through home repair, food scarcity, food insecurity, and lack of school academic resources for at-risk youth as we navigated through the pandemic.

Our dedicated team extends help to countless families through home repair, food scarcity, food insecurity, and lack of school academic resources for at-risk youth as we navigated through the pandemic.

Serving through the “new normal”, we observed the pandemic requirements of the 3W’s: wearing a mask, waiting for six (6) feet, and washing hands. We kept students engaged through our online tutoring and stimulating workshop activities when the stay-at-home order was active. When protocols cleared students to re-enter the classroom, we kept this same drive and dedication towards their success.

Thanks to your generous gifts of human, technical, and financial, PIM’s programs and services were a never-ending beacon to thousands of individuals who are rooted in a cycle of poverty, hunger, and housing insecurity.

The ROAR initiative provided critical home repairs, improving the living conditions in our community, and essential items for our most vulnerable residents. The food distribution programs partnered with community churches to ensure that our reach extended to every open door and open heart in need. Our Youth Empowered to Succeed (YES) program was successful in helping our local students graduate from high school and enroll in college, enlist in the military or enter the workforce.

We are fully committed to fulfilling our purpose of “instilling hope and empowering change, one family at a time”. To this end, PIM continues to nurture, equip, and unlock the potential of the youth in our region to empower and strengthen families.

Our partnerships now and in the future will advocate and advance the building and sustainability of healthy communities through academic enrichment, spiritual growth, and the coordination of other needed programs and services.

Please follow our progress, and thanks in advance for your continuous support and commitment in the years to come.

With Gratitude,
Dr. Melba McCallum
Executive Director

FOUR SIGNATURE PROGRAMS & SERVICES

Partners In Ministry (PIM), a United Women in Faith National Mission Institution, serves as a “One-Stop Resource and Referral Center.” PIM is a healthy, safe, drug-free, and violence-free facility for at-risk youth and their families. PIM is a place conducive to developing academic, social, and cultural life-long skills that are essential to positively impacting their community.

PIM serves the community through four signature programs and services. These services seek to help break the cycle of poverty by providing a “hand-up” approach rather than a “hand-out” for each person to find success. The four signature programs:

01

SYSTEM After-school and Summer Program

The **S.Y.S.T.E.M.** (*Strengthening Youth through Science, Technology, Engineering, and Math*) 21st Century After-school Program is a year-round after-school and summer program providing a structured learning environment for at-risk 3rd through 8th graders performing in the 40th percentile or below in reading and math.

Our primary goals are to close the academic achievement gap by helping students reach academic proficiency and/or meet state and local performance standards.

02

Youth Empowered to Succeed

The **Y.E.S.** (*Youth Empowered to Succeed*) Program targets youth (ages 13-24) in Richmond and Scotland counties through three pathways: post-secondary education through colleges and universities, and/or enlisting in the military or entering the workforce.

These youth face challenges such as school dropout, literacy skills deficiencies, homelessness, pregnancy, drugs, gangs, ‘School to Prison Pipeline, offenders, and/or job/career readiness.

03

Rehab Outreach And Recovery

The **ROAR** (Rehab Outreach & Recovery) Program advocates for a safe and healthy living environment for families living in Robeson, Richmond, and Scotland counties. The ROAR initiative targets the elderly, disabled, veterans, single-parent, and low-income households with special needs. The Program addresses the housing conditions that pose imminent safety threats and provides urgent repairs to prevent displacement.

04

Resource and Referral Center

The Food Pantry, Community Garden, Low Income Energy Assistance (LIEAP), Gift Shop, and Senior Outreach are all services offered through the Resource and Referral Center. These initiatives help ensure our communities' health, safety, and food security. Together with our partners, we provide healthy solutions to provide hunger relief in the communities we serve.

Volunteers and participants from our YES Program operate the Food



STRENGTHENING YOUTH THROUGH SCIENCE, TECHNOLOGY, ENGINEERING, AND MATH (S.Y.S.T.E.M) AFTER-SCHOOL

S.Y.S.T.E.M AFTER-SCHOOL



SYSTEM served 291 participants in 2020 / 2021.

Six (6) elementary (grades 3-5) and two (2) middle schools (grades 6-8) in the Scotland County School (SCS) system.

Mission/Focus	Activity / Project	Data / Outcome
SYSTEM's goals were to: 1. Increase students' reading scores by 5 points each year (or the equivalency of one year of growth), 2. Increase students' math score by 5 points each year (or the equivalency of one year of growth), 3. Improve homework completion and class participation, 4. Improve students' behavior, 5. Engage parents/guardians and family members in positive ways to support the students' development both academic and socially.	Participants are actively engaged in enrichment activities, community service learning projects, visual and performing arts, physical fitness, healthy eating, and life skills activities which help develop the holistic person.	<ul style="list-style-type: none"> Over 87% of 3-5 graders gained five (5) or more points in reading. Over 70% of 3-5 graders gained five (5) or more points in math.
	Project-based learning and inquiry-based instruction are used to prepare participants to become more enthusiastic about STEM learning opportunities.	<ul style="list-style-type: none"> Over 85% of 6-8 graders gained five (5) or more points in reading. 78% gained five (5) more points in math.



TEN GROWTH COMPETENCIES

Overall, **88%** of PIM participants revealed improvement in the ten indicators reflecting social, emotional, and academic growth. SYSTEM After-school program provides a safe, loving, and caring environment where students can excel academically and socially.

87%

**ATTENDING CLASS
REGULARLY**

83%

**ACADEMIC
PERFORMANCE**

92%

**BEHAVING WELL IN
CLASS**

88%

VOLUNTEERING

89%

**BEING ATTENTIVE IN
CLASS**

95%

**GETTING ALONG
WITH OTHERS**

86%

**MOTIVATED TO
LEARN**

87%

**COMPLETING
HOMEWORK**

86%

**PARTICIPATING IN
CLASS**

87%

**TURNUED IN
HOMEWORK ON TIME**

KNOWLEDGE, SKILLS, AND ATTITUDE

SYSTEM's educators create a safe learning environment that is conducive to learning. Educators set high expectations for their students' performances and behaviors.



PARTNERS IN MINISTRY



IMPACT REPORT 2021

SYSTEM HANDS-ON ACTIVITIES



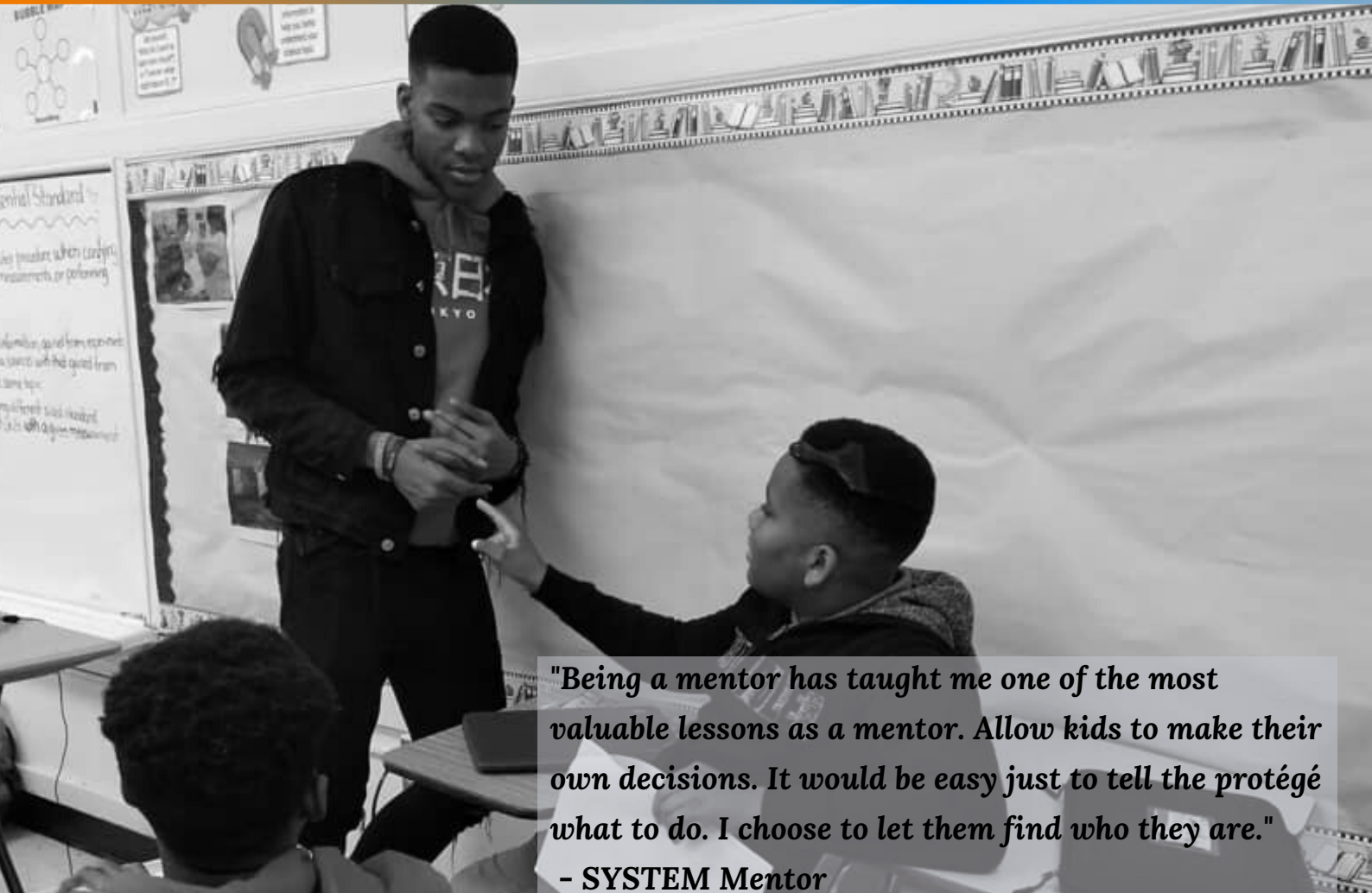
Hands-on learning is introduced to students by allowing them to perform and experience physically.

SYSTEM After-school Program incorporates creative hands-on activities, minds-on exposure, and nurturing in STEM education.

Building, crafting, and flying.



MENTORSHIP



"Being a mentor has taught me one of the most valuable lessons as a mentor. Allow kids to make their own decisions. It would be easy just to tell the protégé what to do. I choose to let them find who they are."

- SYSTEM Mentor

OBJECTIVE

Our mentors are high school seniors and college students who received skills, experience, and training through Partners in Ministry workshops and seminars. The SYSTEM Mentorship Program offers a myriad of benefits to mentors, mentees, and the organization. Most notable is that it increases the sense of connection, belonging, and engagement across teams. Pairing strong leaders with individuals enables people to be more engaged, more committed, and have more purpose within the organization. This level of engagement creates a higher retention rate and a stronger workforce.

Partners In Ministry served ten mentors in SYSTEM After-school Program. The SYSTEM mentorship program allowed both educator and mentor to identify those students who lacked the critical skills needed to transition from elementary to middle school.

A good mentor can help the mentee become more effective in this transition, learn new skills, develop greater confidence, and make better decisions for their overall academic growth.

CAMP STEMULATION

During the 2021 summer, there were 140 students enrolled in SYSTEM Camp STEMulation.

The camp operated for five weeks, including learning and fun activities for the participants. The elementary and middle school youth attended one week of outdoor camp and one week virtually.

STIMULATING ACTIVITIES GARDENING

Outdoors is an essential and rich part of SYSTEM's program's daily curriculum delivery. Students select a few plants that will produce a delicious edible harvest for them to pick and take straight to the table from the garden.



They are taught the importance of native vegetation in gardens. Students have the pleasure of planting, watering, and waiting for their little plants to sprout. Students are encouraged to learn as much as possible about native plants and how to care for them.



Teaching aviation helps students understand science, technology, and flight applications. In addition, students gained a deeper appreciation of physics, weather, and engineering concepts that they can apply to other courses and real-world scenarios.



CAMP STEMULATION

Camp STEMulation 2021 received rave reviews from students, parents, and community members. Students engaged in educational activities, including the principle of flight and design, the hydroponic system, engineering concepts, food production, entrepreneurship, inventions, and innovative technology.

The summer activities were swimming, skating, and bowling. Additionally, students took excursions to visit Myrtle Beach, Camp Rockfish, Wonder Works, and Carowinds. Camp STEMulation is entirely free to all SYSTEM Afterschool participants.



A SYSTEM participants study science and technology to understand and apply the principles of flight.

B Students studied water scarcity and the lack of freshwater resources to meet the standard water demand.

C Participants engaged in food production using raised beds and a hydroponic system.

D Participants designed and built drones and airplanes.

Camp STEMulation offered an enriched classroom setting and operative outdoor environment, which allowed students to explore STEM (science, technology, engineering, and math) projects.



The Camp STEMulation experience offers a nurturing environment away from distractions, and in some cases, a hostile environment. Best of all, children create memories that last a lifetime.



2021 Camp STEMulation Activities



GOLF



CHEERLEADING



BASEBALL



BASKETBALL



SKATING



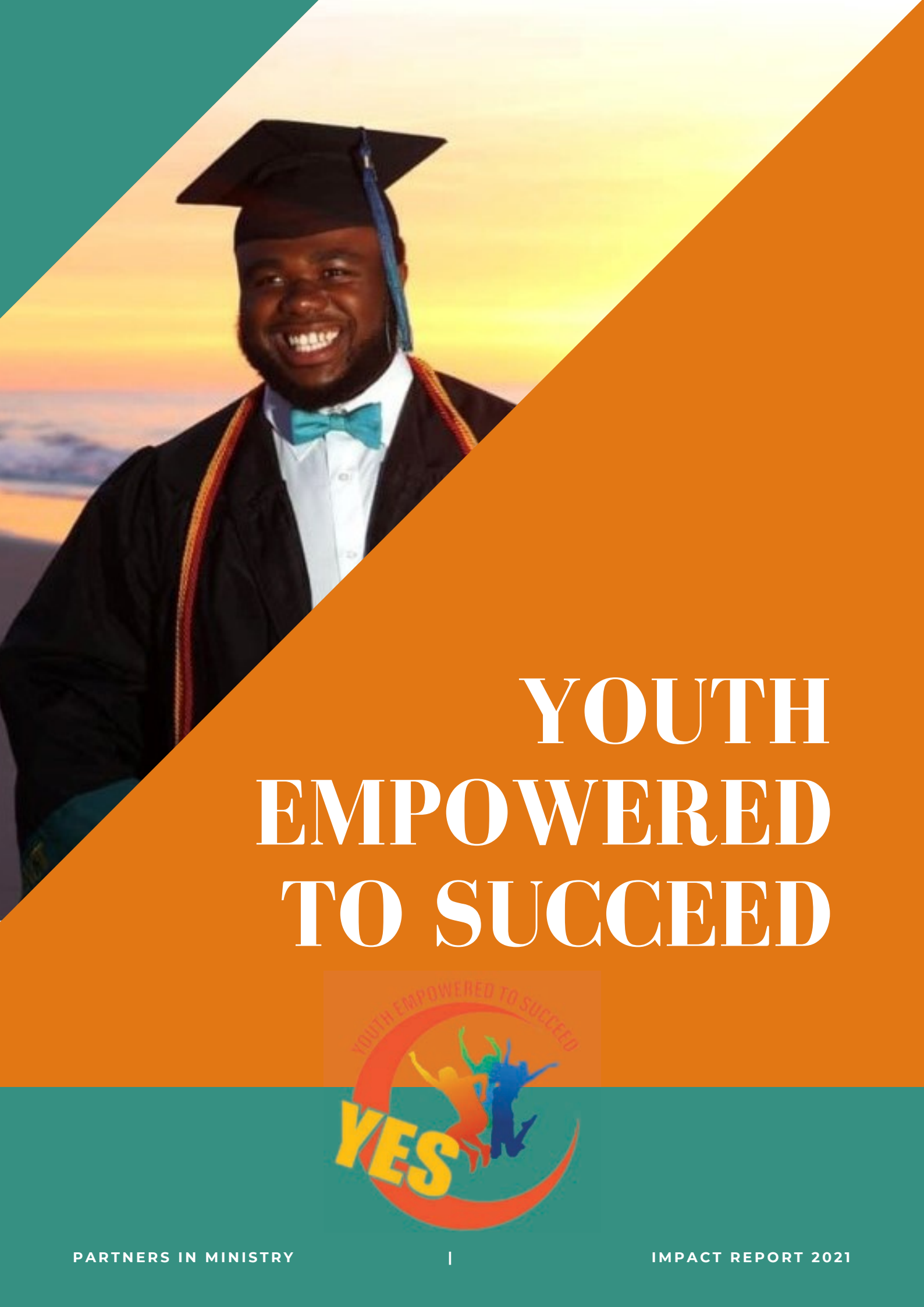
BOWLING



VOLLEYBALL



WATER PARK



YOUTH EMPOWERED TO SUCCEED



YOUTH EMPOWERED TO SUCCEED

15

The Y.E.S. program is a work-ready training pathway initiative that prepares youth for the job opportunities that our local and regional employers are seeking to fill.

The Program's goals are to keep youth in school, focused on a career path, and graduate on time. Achieving these goals will combat the school-to-prison pipeline.

Y.E.S. has two main programs:

The **Workforce Innovation and Opportunity Act** (W.I.O.A.) and the **Juvenile Crime Prevention Council** (J.C.P.C.).

These programs seek to help close the employment gap by partnering with businesses, industries, and community colleges to develop youth employment pathways that bridge the skills gaps in the region.



The YES program
empowers youth by
instilling strong work
ethic skills.



7 likes

richmondccedu Students in the U.E.S. (Youth Empowered to Succeed) mentoring program toured the Hamlet Campus this week to learn about different careers and how RichmondCC can be the starting point for their education from short-term training classes to guaranteed admissions pathways with other colleges and universities.
<https://richmondcc.edu/academics/programs>
#careerexploration #youthempoweredtosucceed
#richmondcc #college #highereducation
#transferprograms #guaranteedadmissions

July 17

WORKFORCE INNOVATION OPPORTUNITY ACT

W.I.O.A IN AND OUT-OF-SCHOOL YOUTH



Pictured are both Richmond and Scotland county youth participating in various enrichment activities. In 2021, youth attended college tours, seminars, workshops, and career fairs. Youth also engaged in on-the-job training (OJT) and community service activities.



PO...IT'S THE SMILE FOR ME 🥰

Javon Quick is with Shamekia Martin in Wilmington, North Carolina.
2h · 🌐

It's been a fun ride here at the dub... in just 4 days I will be a 2021 Magna Cum Laude Seahawk Grad. I couldn't be more thankful for God guiding me these past 4 years 🙏🏾.

#LS 🎓



W.I.O.A SERVICES & ACTIVITIES



Through service activities, the youth develop habits and tools for ethical and moral decision-making; and leadership skills.

The youth partook in various employment/ training workshops, tutoring, mentoring, school/college tours, entrepreneurship opportunities, learning excursions, and fun activities contributing to their overall educational and leadership development.

W.I.O.A. ENROLLED 106 YOUTH



Engaging in community service provides students with social and emotional growth, which allows the youth to become active members of their community and have a lasting, positive impact on society. In addition, volunteerism enables youth to acquire life skills and knowledge while providing a service to those who need it most.



During Sha'Toya Covington's (pictured left) last year in the Y.E.S. program, she was offered an intern position for a nonprofit organization. She also helped SYSTEM After-school mentors build robots for their youth.

JUVENILE CRIME PREVENTION COUNCIL (J.C.P.C.)

The **J.C.P.C.** program provides early intervention for at-risk youth through its mentorship program while focusing on the prevention measures to deter the “School To Prison Pipeline.”

J.C.P.C. prepared the youth to become change agents and make a difference in their communities through community services such as working in our community gardens, Food Pantry, Gift Shop, ROAR housing ministry, and community outreach. Y.E.S. enrolled 16 mentees in the J.C.P.C. program and 12 mentors.



Youth Empowered to Succeed > J.C.P.C.

Mentees



Pictured above are a few youths in the J.C.P.C. program.

KEDAR MONROE - Y.E.S. Youth-of-the-Year 2021

Kedar Monroe is Youth Empowered to Succeed 2021 Youth-of-the-Year. He is a senior at Scotland High School and has been a part of the Y.E.S. program for four years, participating in many classroom experiences, workshops, and college tours.

Kedar has faced and overcome many challenges and has learned that “the race isn’t given to the swift nor the battle to the strong” (Ecclesiastes 9:11), but it is given to the one that endures until the end.

After high school, Kedar plans to pursue his Bachelor of Fine Arts in Drawing and Illustration.



MENTORSHIP PROGRAM

MENTORSHIP

The J.C.P.C. program offered mentorship services for its mentees. Youth paired with mentors who participated in team-building exercises and provided support, guidance, and one-on-ones to help them succeed and meet their goals.

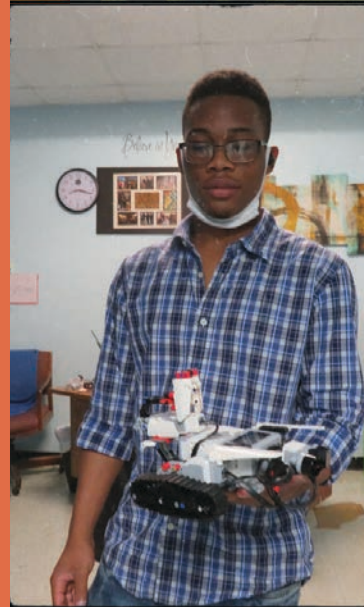


MENTORING TECHNIQUES

The mentorship program aims to focus on each individual's goals and career development opportunities and match them with very supportive leaders.

Benefits for youth:

- Healthier relationships and lifestyle choices
- Higher college enrollment rates and higher educational aspirations
- Enhanced self-esteem and self-confidence
- Improved behavior, both at home and at school
- Stronger relationships with parents, teachers, and peers
- Improved interpersonal skills.
- Decreased likelihood of initiating drug and alcohol use.



J.C.P.C.

COMMUNITY SERVICE

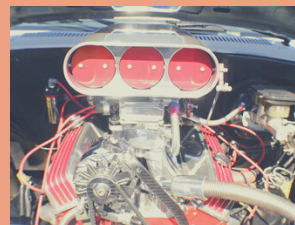
Youth in the Y.E.S. Mentorship Program volunteered at the car show sponsored by First Assembly of God of Maxton (NC) on September 25, 2021. Youth were a part of the clean-up and assembly crew. They also interacted with the car show competitors.



Car show attendees were automotive industry representatives, dealers, non-profit organizations, car enthusiasts, and community members.



Pictured above is Y.E.S. participant touring the cars in the car show competition.



SUCCESS STORY

KAYLA ALFORD



Kayla Alford, a resident of Scotland County, is currently serving as an intern for Garland Pierce, NC State Representative. Kayla also served as a mentor for the SYSTEM After-school program and an active participant in the Y.E.S. program.

“Working at the General Assembly has been a tremendous opportunity thus far,” Kayla stated. “I am developing my leadership skills each day.” She is currently a senior at North Carolina State University, majoring in Social Work. Alford attended Scotland Early College High School.

Kayla was a part of organizations like the Juvenile Crime Prevention Council and Teen court that prepared her to work within the political field. Growing up, she saw a need for change within her communities; She knew that was what she wanted to do!

As a child, Kayla would observe how different communities based on socioeconomic statuses would receive resources and opportunities compared to other communities. Therefore, she desired to provide everyone with adequate and equal opportunities no matter their income.

Becoming a policy analyst and majoring in social work will allow Kayla to give back to Scotland County in a multitude of ways. “Working with Rep. Pierce has allowed me to observe and gain insight into politics in a deeper and influential way,” Kayla said. “During my time here, I have developed and drafted letters to different individuals in Scotland and Hoke County. I have also worked alongside Janice Fenner, the Legislative Assistance for Representative Pierce. In addition, we work on several tasks daily for Rep. Pierce. Lastly, I have continued to develop relationships with other members of the Legislative building throughout my time here.”

Credit: "Alford doing internship with Rep. Pierce." Laurinburg Exchange, 27 Sep. 2021

SUCCESS STORIES

TYRELL CAMPBELL, SCOTLAND COUNTY, NC

Tyrell Campbell is a Scotland County resident currently serving in the W.I.O.A. program. In the tenth grade, Tyrell dropped out of high school and turned to the local neighborhood gang as a source of brotherhood and security. With no high school diploma or work-ready skills, he managed odd jobs throughout Scotland County. At the age of 21, after ending his relationship with the neighborhood gang, Tyrell realized that life and education were precious to him.

He enrolled in the Y.E.S. program and engaged in work experiences with PIM's Rehab Outreach And Recovery (ROAR) program, where he worked alongside ROAR mission teams to rehabilitate deteriorated homes in blighted neighborhoods.

Since his enrollment in the program, Tyrell has successfully helped restore 15 houses in Robeson and Scotland counties.

On May 25, 2021, Tyrell Campbell graduated from Richmond Community College (RCC) with an Associates' Degree in Mechanical Engineer Technician.



SHANTEL EASTERLING, RICHMOND COUNTY, NC

Shantel Easterling is a high school graduate of Richmond Senior High School. Shantel comes from a low-income, single-parent family of six. She attended communication and social skills, self-esteem building, and conflict resolution workshops at Richmond Community College (RCC).

Shantel struggled academically in high school. However, through the W.I.O.A. program, she received tutoring and one-on-one counseling. With this help, Shantel increased her reading and math scores, setting her on track to graduate. As a result, Shantel was able to keep up her good grades while she completed her work experience and on-the-job (OJT) training. Shantel has since decided to enroll in the National Guard Armory and plans to pursue a career in physical therapy.



Program Supportive Services

The youth engaged in various employment and training workshops, tutoring, mentoring, school/college tours, entrepreneurship opportunities, learning excursions, and fun activities contributing to their overall educational and leadership development.

These opportunities have afforded the youth experiences and opportunities that nurture their social and emotional growth.

PROGRAM SUPPORTIVE SERVICES

Obtained Educational Diploma

4

Obtained College Degrees

4

Enrolled in Post Secondary Education

14

Obtained Full Or Part-time Employment

20

Obtained Work Experience

36

Training/Work Skills

28

Engaged in Mentoring Activities

106

REHAB OUTREACH AND RECOVERY



THE REHAB OUTREACH AND RECOVERY (R.O.A.R.) PROGRAM

The R.O.A.R. **Housing Program** advocates for safe and healthy living environments for families. R.O.A.R. ensures that homeowners are not displaced due to hazardous living conditions.

Through this ministry, volunteer mission teams provide urgent home repairs and disaster relief repairs to make homes safe to live in and eliminate the threat of displacement.

Clients are served under the North Carolina Housing Finance Agency's two (2) housing repair programs: **Urgent Home Repair** and **Essential Single-Family Rehabilitation Program**.



Pictured are volunteers from the Ohio mission team helping restore a Robeson County home.

THE REHAB OUTREACH AND RECOVERY (R.O.A.R.)

ROAR SERVICES

URGENT HOME REPAIR PROGRAM (UHRP)

The **UHRP** assists low-income homeowners with urgent repairs, eliminating health, safety, and environmental hazards for elderly, veterans, handicapped, or disabled residents.

RESTORED HOMES

- Five (5) homes were restored through the Urgent Homes Repair Program.



ESSENTIAL SINGLE-FAMILY REHABILITATION (ESFRP)

Under the **ESFRP**, homes must be occupied by households with elderly, disabled, and/or Veteran full-time household members or a child six years old or younger with lead hazards. Household incomes must be at or below 80% of the area median income.

RESTORED HOMES

- 10 homes were restored through the Essential Single-Family Rehabilitation Program. Three (3) homes are in progress.



R.O.A.R. IMPACT



**TOTAL
EXPENDITURES**

\$398,373



**HOME
REPAIRS**

18



FAMILIES SERVED

24



TOTAL VOLUNTEERS

13



MISSION TEAM

2



CONTRACTORS

4



VOLUNTEER HOURS

947



VALUED HOURS

\$19,920



RESTORING HOMES



Emergency repairs correct housing conditions that threaten one's life or safety, such as failing septic systems, dangerous heating systems, or rotten floors.



R.O.A.R. volunteers restored a Scotland County Homeowner's floor by replacing the rotten wood with new wood.



13

ESFRLP-DR
Home Repairs

5

URHP
Home Repairs

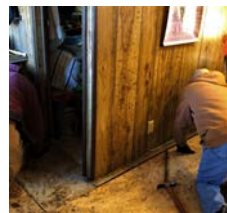
THE REHAB OUTREACH AND RECOVERY



Team members do maintenance, cleaning, painting, electrical, drywall, sewing, and flooring. With God's help, the NOMADS pretty much do it all. The NOMADS replaced the homeowner's flooring, windows, doors, and decks.

NOMADS is an outreach ministry of the United Methodist Church through the General Board of Global Ministries, working with United Methodist organizations and appointed National Mission Institutions (NMI) such as Partners In Ministry.

NOMADS is a group of volunteers from mission teams from all over the United States repairing disaster homes. NOMADS provided volunteer labor and services, including new construction, remodeling, and repairs for churches, children's homes, camps, colleges, outreach missions, and disaster rebuilding to Richmond and Scotland county residents.



"I am very grateful for this opportunity to get my home repaired. I would like to thank Partners In Ministry and the ROAR team for all they do," stated Robeson County homeowner.



Credit Nomad's website here.. Example: International Narcotics Control Board 1999, United Nations, accessed 1 October 1999, <<http://www.incb.org>>

RESOURCE & REFERRAL (R&R) CENTER

The R&R Center's mission is to help families living in poverty to become self-sufficient through a hand-up approach.

To achieve this mission, the R&R Center partners with over 100 agencies across the country. These strategic partnerships support children, youth, and families with food assistance, clothing, household items, and essential services.

We ask everyone who receives services from Partners In Ministry to partner with us in any way possible. We believe everyone has skills and abilities that they can share, and everyone can make a "sweat equity" contribution to our work, no matter how small.

We also believe there is dignity in the exchange; given the opportunity, most families would like to volunteer in exchange for receiving services or resources from Partners In Ministry. We view this partnership as sitting on both sides of the table as the giver and receiver.

By addressing family needs, PIM can inform, educate, and provide continuous support to help break the cycles of poverty plaguing our community.



SCOTLAND COUNTY



RESOURCE & REFERRAL CENTER

COMMUNITY GARDEN



PIM Reading Specialist Wanda Monley and SYSTEM mentors tending to Swiss Chards planted by the Y.E.S. youth.

The gardens produce beets, hot green peppers, bell peppers, green onions, tomatoes, collard, chard, and mustard greens. The harvest from the garden is shared with the community through free food box distribution, free food sampling events, and occasional fundraising plate sales. Ben McCallum leads the community gardens with students from Youth Empowered to Succeed (YES), Department of Social Service workers, and volunteers.

Everything changed when the COVID-19 pandemic hit. Many residents lost jobs, livelihood, and means of putting food on the table, literally and figuratively. Food insecurity, brought on by the pandemic, had its spotlight, and the families in Scotland County, North Carolina, were not exempt from this harsh, new reality.

Feeding America, a national hunger-relief organization, defines food insecurity as the lack of access to adequate food, by everyone in the household, at all times to ensure a healthy and well-nourished life. The nonprofit reported that Scotland County has the highest food insecurity rate (19.7%) in all of North Carolina. Many county residents, including children, lack access to sufficient food.

Since its inception, Partners In Ministry has been tackling food insecurity in Scotland County. There is an active food distribution service helping over 2000 families, but there are also two community gardens providing access to fresh vegetables and healthy foods.

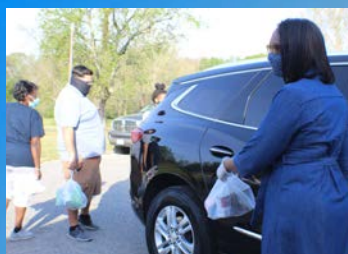


Ben McCallum, the community garden instructor, teaches 3rd through 5th graders about farming.

HUNGER RELIEF

FOOD PANTRY DISTRIBUTION

PIM's food distribution services provide donated food at no cost to people who have limited access to hunger relief. In addition, community organizations partnered with PIM's food pantry to provide food to families.



FOOD BANK OF CENTRAL EASTERN NC

The Food Bank of Central & Eastern North Carolina (the Food Bank) is a nonprofit organization that has provided food for our friends and neighbors facing hunger in 34 counties in central and eastern North Carolina for over 40 years. The Food Bank is an affiliate member of Feeding America, the nation's leading domestic hunger-relief charity.



THE EMERGENCY FOOD ASSISTANCE PROGRAM (TEFAP)

A federal program that helps supplement the diets of low-income Americans by providing them with emergency food assistance at no cost. The Food Pantry served 176 families through The Emergency Food Assistance Program.



HUNGER RELIEF

COMMODITY SUPPLEMENTAL FOOD PROGRAM (CSFP)

CSFP works to improve the health of low-income persons at least 60 years of age by supplementing their diets with nutritious USDA Foods. The CSFP served one hundred families commodity boxes in 2021.



SUPPLEMENTARY NUTRITION ASSISTANCE PROGRAM (SNAP)

SNAP is a Federal Program that provides food-purchasing assistance for low-and no-income participants. Participants must meet specific requirements to qualify for the program.

PIM assisted Scotland County residents with SNAP applications to obtain assistance with food purchasing.



RESTORING HOPE CENTER

Restoring Hope Center is an organization supporting multiple foods or agriculture nonprofits in Laurinburg, NC whose mission is: Distribute food to organizations and needy families.



DISTRIBUTION SERVICES

Thanks to partnerships with most local food agencies, the Food Pantry, and our partner agencies can pick up and distribute thousands of pounds of food each year.



CHURCH DISTRIBUTION

Partners In Ministry's partnership with the local church and faith-based organizations has expanded the reach of hunger relief in the communities we serve together.



THREE MAIN WAYS COMMUNITY MEMBERS HAVE SUPPORTED

- Donated food
- Donated money
- Volunteered their time



RESOURCE & REFERRAL CENTER

Duplicated Families Served
9,486

FOOD PANTRY IMPACT

FAMILIES SERVED **2,070**

Food Pantry	304
CSFP	101
TEFAP	325
Churches Distribution Ministry	1,340



FOOD BOXES **3,378**

Produce Boxes	1,242
Disaster Boxes	178
Commodity Boxes	464
Combination Boxes	1,169
TEFAP	325



MEALS SERVED **5,489**

SYSTEM Meals	2,121
Thanksgiving Meals	65
Summer Meals	2,452
Family Meals	851

FOOD WEIGHTAGE

Perishable Goods	160,987 Lbs.
Non-perishable Goods	99,485 Cases
Beverages	5,398 Lbs.



Free Mobile Pharmacy



Many local and surrounding community members attended Partners In Ministry's first Mobile Pharmacy Drive-thru Event on June 11, 2021. Long-time partners United Healthcare Group and Innovative Insurance Group sponsored the event. The Mobile Pharmacy provides individuals and low-income families with free over-the-counter medicine. The over-the-counter bags ranged from cold, cough, and flu medicine; pain relief; vitamins; children's medicine; liquid bandaids; nicotine products, etc.



Attendees collected their medicines and received food from our Food Pantry. We were able to distribute over 170 bags. This event aims to identify participants that may qualify for the free prescription pharmacy program through the NC MedAssist Program. The mission was to ensure all community members could receive the necessary medicines they would need during these uncertain times.



Gift Shop

The Partners In Ministry (PIM) Gift Shop offers a variety of new and gently used clothing, household items, and pet items. One can browse for something as small as 'trinkets' to something as large as a lounge chair. The Gift Shop has a gift for almost every occasion. It is considered a 'one-stop-shop for unique gifts, inspirational gifts, gifts for gift baskets, the 'perfect gift'.

In 2021, the Gift Shop received 1,470 donated items from over 50 donors generating \$9,255 in in-kind earnings.



Several times a year, the Gift Shop sponsors a 'grand' sale. Items are placed on the lawn in front of the Gift Shop and in the gymnasium. The grand sale is advertised in the media (local newspaper, local radio station, Chamber of Commerce, churches, and organizations). The Gift Shop staff volunteered 973 hours during 2021.

REACHING SOULS WITH SOLES: A 'HANDS - UP' MINISTRY

Reaching Souls with Soles: A 'Hands Up' Ministry shoe drive fundraiser was a success!

Partners In Ministry will also have the opportunity to utilize funds raised from the initiative to support the construction of the State Employees' Credit Union (SECU) Community Education Center.



Over 150 individuals and organizations made a lasting impact on thousands of lives worldwide.

Total in-kind equaled \$25,762..



**United
Women
in Faith**

The fundraiser collected 25,156 pairs of shoes equaling 1,005 bags of shoes, from various locations in North Carolina through this extraordinary collaboration with churches, sororities, organizations, businesses, and individuals.

BEACON DISTRICT

**79
BAGS
1,975 PAIRS**

CAPITAL DISTRICT

**183
BAGS
4,580 PAIRS**

CORRIDOR DISTRICT

**135
BAGS
3,375 PAIRS**

FAIRWAY DISTRICT

**36
BAGS
900 PAIRS**

GATEWAY DISTRICT

**206
BAGS
5,144 PAIRS**

HARBOR DISTRICT

**162
BAGS
4,063 PAIRS**

HERITAGE DISTRICT

**44
BAGS
1,100 PAIRS**

SOUND DISTRICT

**101
BAGS
2,525 PAIRS**

PARTNERS IN MINISTRY

**59
BAGS
1,494 PAIRS**

GROUNDBREAKING CELEBRATION



Partners In Ministry (PIM) held its groundbreaking ceremony for its new State Employees' Credit Union (SECU) Community Education Center on Tuesday, November 16, 2021, in East Laurinburg, North Carolina.

Several speakers gave homage to PIM at the event, hailing the non-profit organization as an excellent resource for the community.

Bishop Leonard Fairley, an attendee at the groundbreaking ceremony, stated, "Being from Scotland County, it is a great pleasure and honor to come back to this place and see what's offered here. But what I say to you is it does not stop here. We must all continue to support these programs now and into the future. We must always ask ourselves, what can I do to help?"

The soon-to-be-built education center has been named the State Employees' Credit Union Community Education Center after the organization donated 1 million dollars to PIM to assist with construction costs and materials for the project. Pictured here are, left to right: Scott Southern, Dr. Melba McCallum-Executive Director PIM, and Jama Campbell-SECU Representative.



Pictured above from left to right:

Dr. Melba McCallum, SYSTEM student, accompanied by Rev. Gypsie Murdaugh, Mary Evans, JoAnne Sanford, Bishop Leonard Fairley, Greg Thompson, Betty Gholston, and Rep. Garland Pierce.

GROUNDBREAKING CELEBRATION

Dr. Melba McCallum (pictured right top) stated, “As the executive director of Partners In Ministry, I would like to thank everyone who has helped make our work possible. In addition, partners In Ministry thank everyone for sharing our beautiful blessing with the community”. She continued, “Groundbreaking set the tone for Partners In Ministry’s many endeavors. Our support truly shows that we are in this together.” Also present at the function was Jo Anne Sanford, Chair of SECU’s Foundation Board of Directors. Sanford, (pictured right middle) said, “Being originally from East Laurinburg myself, it is a great honor to support such a wonderful project. My grandparents lived just around the corner, and in those days, it was such a wonderful place to grow up.” Sanford continued. “To see this building built here is just awesome. It is also great to see that community is still very much evident here. I also want to thank all of our SECU members for their donations that made this possible. Donating just a dollar a day adds up, and they helped make this donation possible.”

After hearing the program participants, guests were escorted to the area for the groundbreaking. Under the direction of Kent Murphy, PIM music instructor (pictured bottom left), SYSTEM students entertained the guests with songs.



Other program participants included: *Gary Gallman* (pictured top row middle), Master of Ceremonies (WLNC 95.1 FM Hometown Radio); *Steve Taylor* (pictured top row right), Invocation (Home Missioner and Executive Director of UMC Connectional Ministries); *Rev. Gypsy Murdaugh* (pictured bottom row right), PIM Board Chair and pastor of Piney Grove and St. George United Methodist Churches-Gateway District); *Betty Gholston* (pictured bottom row left), Vice-Chair, Scotland County Commission, and *Rep. Garland Pierce* (pictured bottom row middle), NC State Representative.

VOLUNTEERS

42

PROGRAMS & SERVICES	HOURS	IN-KIND
ADMINISTRATION	1,902	\$25,957
ADVISORY BOARD	66	\$901
J.C.P.C. MENTEES	70	\$956
J.C.P.C. MENTORS	768	\$1,048
MEDIA/TECHNOLOGY/COMM.	5,200	\$114,400
OUTREACH	625	\$8,531
RESOURCE & REFERRAL	3,090	\$42,179
ROAR	947	\$14,868
SYSTEM AFTER SCHOOL	32	\$437
W.I.O.A.	1,660	\$22,659

VOLUNTEER IMPACT



**TOTAL
VOLUNTEERS
120**



**TOTAL
VOLUNTEER
IN-KIND
\$274,804**



**TOTAL
VOLUNTEERS
HOURS
14,411**

2021 RECAP

Life has changed for many since the COVID-19 pandemic, but PIM has remained dedicated thanks to its partners, donors, and local community residents. Many families in Scotland, Robeson, and Richmond counties are still recovering from the devastating impact, and we have been there offering a “hand-up” approach wherever possible.

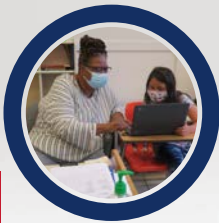
In 2021, PIM will continue to provide the community with access to food through our food distribution services, home repairs through our ROAR ministry, and access to educational resources for our children and youth through the SYSTEM After-school and Y.E.S. program.

Last year we broke ground on our community education center and were excited about the new life this facility and its programs will breathe. We are grateful for all we accomplished in 2021. With your prayer, donations, and continued support, we do so much more.

YOUTH PROGRAMS

ENROLLED

413



RESOURCE & REFERRAL CENTER

2,070

FAMILIES SERVED



9,486

DUPLICATED



18

HOME REPAIRS

R.O.A.R PROGRAM



24

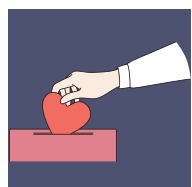
HOME REPAIRS

SHOE DRIVE



25,156

PAIRS OF SHOES DONATED



GIFT SHOP

\$274,804

TOTAL IN-KIND DONATIONS



TOTAL PEOPLE SERVED 2,461



Building Bridges through Community Partnerships

Partners In Ministry works alongside several government agencies, religious organizations, and educational systems, including:

21st Century Community Learning Centers	Scotland County Department of Health & Human Services
AARP Senior Program Afterschool Alliance	Scotland County Memorial Hospital
Alpha Kappa Alpha Sorority, Inc., Rho Alpha Omega Chapter—Laurinburg, N.C.	Scotland County Schools (SCS)
Anonymous	Scotland County School Board
Burroughs-Wellcome Foundation	State Employees' Credit Union
Cascade Tissue Group Inc.—Wagram Churches	The Duke Endowment
Community Colleges & Universities	USDA - Child and Adult Feeding Program
Community Service Agencies	UNC-TV
Emergency Food and Shelter Program—FEMA	United Healthcare
First Health Moore Regional Hospital - Richmond County	Workforce Development Board
Food Bank of Central & Eastern North Carolina	Zeta Phi Beta Sorority, Inc., Alpha Alpha Phi Zeta Chapter- Laurinburg, N.C.
Bank of The Carolinas	
General Board of Global Ministries	More than 100 community partners have collaborated towards PIM's vision, six (6) media outlets, including online media and cable channels, over fifty (50) religious organizations, and countless community members.
Habitat for Humanity of the NC	
Sandhills Innovative Insurance Group	
Juvenile Crime Prevention Council	
Law Enforcement	
Local Businesses	
Lumber River Workforce Development Board	
National Mission Institution (NMI)	
North Carolina Conference of The United Methodist Church (NCCUMC)	
North Carolina Conference of The United Methodist Women (NcCUMW)	
NC Department of Public Instruction	
NC Healing Communities	
NC Department of Public Destruction	
NC Department of Public Housing NC	
MedAssist NC Works	
Marine Toys for Tots	
Restoring Hope	
Resourceful Communities	

BOARD OF DIRECTORS



DR. MELBA MCCALLUM

Director



**PASTOR
GYPSIE MURDAUGH**

PIM's Board Chair



MRS. MARTHA CAVES

*NC Conference President
of UMW*



**PASTOR
KENNETH LOCKLEAR**

*District Superintendent of the
Gateway District*



**PASTOR
GEORGE ELLIS**

*Pastor of Union Grove
Baptist Church*



**BRANDI JONES BULLOCK,
ESQ.**

Attorney at Law



**MRS. JAMIE T.
ADAMS**

Assistant District Attorney



MRS. LYNN CLEWIS

*PIM's Co-Chair of the
Fundraiser Committee*



MRS. HAZEL HALL

*PIM's Co-Chair of the
Fundraiser Committee*



MRS. MYRA COOPER

Retired Educator

As one of the original Directors, I can attest that Partners In Ministry (PIM) has made a significant impact on the lives of many people in Richmond, Robeson, and Scotland counties. PIM daily serves over 200 children in a STEM program known as SYSTEM. The ministry also helps youth (ages 11- 24-years-old) to depart from the school-to-prison pipeline by supporting them in furthering their education or training for gainful employment. In addition, the housing ministry renovates over 50 houses every year for senior citizens, and the food ministry feeds over 1,000 families annually with a Food Pantry Program. This area of NC is soaked in poverty, but with one child, one family, and one neighborhood, Partners In Ministry has been making a difference for almost 15 years.

**Rev. Gypsie Murdaugh,
Partners In Ministry Board Chair**

FOLLOW US...



S
U
B
S
C
R
I
B
E
&
L
I
K
E
!



MAKE A DIFFERENCE. DONATE TODAY.

Text-to-Give

**TEXT "GIVE" OR
"DONATE" TO
(910)335-8774**

**Website
www.pim-nc.org**

Ways-to-Give

**Advance Special #:
#S-00193; #S-00195
Supplementary Giving
#N273780**

Cash App

\$PartnersInMinistry

**Write A Check to
Partners In Ministry
12 Third Street, E.
Laurinburg, NC 28352**

We thank you for your continued support in our efforts to complete the SECU Community Education Center.



*Partners In Ministry 5(c)(3)
Resource and Referral Center
National Mission Institution
United Women in Faith*

SECU Community Education Center



12 3rd Street, E. Laurinburg, NC 28352

Mailing Address:

PO Box 1621, Laurinburg, NC 28353

www.pim-nc.org

Email: info@pim-nc.org

Tel: (910)277-3355 Fax (910)277-3358